

Planet KG- SM set narrow

11,5 x 38 mm | 16 mm | 48 dB



Overview of Advantages

- Drop-down seal for glass, wood, metal and PVC doors
- Lift height up to 16 mm
- Acoustic insulation level up to 48 dB with optimum sealing
- Easy installation with adhesive tape set
- For new and existing doors
- Elegant architectural design solution
- Can be used for left and right doors
- Single-sided and silent release
- No grinding over the floor thanks to parallel lowering
- Automatic compensation for sloping floors
- High-quality silicone lip, lateral protrusion adjustable
- Easy lift adjustment
- Can be shortened to the next smallest length
- 7-year warranty

Incl. accessories

Complete set consisting of drop-down seal, protection profile with prepared double adhesive tape, assembly adhesive, cover plates, stopping plates, fastening screw, optical film, Allen key

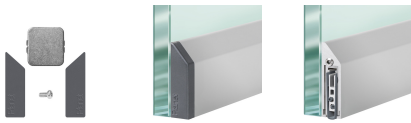
Tender specification

Automatic door drop-down seal Planet KG-S narrow RD | 48 dB, single-sided release with parallel lowering and automatic compensation for sloping floors, protection profile in silver anodised EV1, matt stainless steel or matt black C35 matt anodised, for gluing to the side. Seal height up to 16 mm. Silicone lip. protection profile and profile made of aluminium 11.5 x 38 mm, incl. lock-side cover plate for hinged doors.

Technical data

Seal profile	high-quality silicone
Sound absorption value	up to 48 dB at ground air 7 mm
Frame protector plate	stainless steel, for knocking in, 20 x 20 mm
Fastening	for gluing
Can be shortened	max. 125 mm
Release	on one side, hinge side
Lift height adjustment	on release pin with 3 mm Allen key
Max. lift height	16 mm
Profile size	11.5 x 38 mm
Profile material	Aluminium
Surface	silver anodised EV1, matt anodised stainless steel (INOX) or black C35 matt anodised

Planet KG-S narrow, release side



Features / versions (depending on options)



Floor surfaces



Possible door types (depending on options)



Variants that can be ordered

Order number	Version	Surface	Length	can be shortened to	Order placement information
38040-SMs	smoke-shielding	silver anodised EV1	400 mm		no function
38046-SMs	smoke-shielding	silver anodised EV1	459 mm	>335 mm	
38059-SMs	smoke-shielding	silver anodised EV1	584 mm	>460 mm	
38071-SMs	smoke-shielding	silver anodised EV1	709 mm	>585 mm	
38084-SMs	smoke-shielding	silver anodised EV1	834 mm	>710 mm	
38096-SMs	smoke-shielding	silver anodised EV1	959 mm	>835 mm	
38109-SMs	smoke-shielding	silver anodised EV1	1084 mm	>960 mm	
38121-SMs	smoke-shielding	silver anodised EV1	1209 mm	>1085 mm	
38134-SMs	smoke-shielding	silver anodised EV1	1334 mm	>1210 mm	
38146-SMs	smoke-shielding	silver anodised EV1	1459 mm	>1335 mm	

38200-SMs	smoke-shielding	silver anodised EV1			per running metre
38040-SMXs	smoke-shielding	Matt anodised stainless steel (INOX)	400 mm		no function
38046-SMXs	smoke-shielding	Matt anodised stainless steel (INOX)	459 mm	>335 mm	
38059-SMXs	smoke-shielding	Matt anodised stainless steel (INOX)	584 mm	>460 mm	
38071-SMXs	smoke-shielding	Matt anodised stainless steel (INOX)	709 mm	>585 mm	
38084-SMXs	smoke-shielding	Matt anodised stainless steel (INOX)	834 mm	>710 mm	
38096-SMXs	smoke-shielding	Matt anodised stainless steel (INOX)	959 mm	>835 mm	
38109-SMXs	smoke-shielding	Matt anodised stainless steel (INOX)	1084 mm	>960 mm	
38121-SMXs	smoke-shielding	Matt anodised stainless steel (INOX)	1209 mm	>1085 mm	
38134-SMXs	smoke-shielding	Matt anodised stainless steel (INOX)	1334 mm	>1210 mm	
38146-SMXs	smoke-shielding	Matt anodised stainless steel (INOX)	1459 mm	>1335 mm	
38200-SMXs	smoke-shielding	Matt anodised stainless steel (INOX)			per running metre
38040-SMBs	smoke-shielding	black C35 matt anodised	400 mm		no function
38046-SMBs	smoke-shielding	black C35 matt anodised	459 mm	>335 mm	
38059-SMBs	smoke-shielding	black C35 matt anodised	584 mm	>460 mm	
38071-SMBs	smoke-shielding	black C35 matt anodised	709 mm	>585 mm	
38084-SMBs	smoke-shielding	black C35 matt anodised	834 mm	>710 mm	
38096-SMBs	smoke-shielding	black C35 matt anodised	959 mm	>835 mm	
38109-SMBs	smoke-shielding	black C35 matt anodised	1084 mm	>960 mm	
38121-SMBs	smoke-shielding	black C35 matt anodised	1209 mm	>1085 mm	
38134-SMBs	smoke-shielding	black C35 matt anodised	1334 mm	>1210 mm	
38146-SMBs	smoke-shielding	black C35 matt anodised	1459 mm	>1335 mm	
38200-SMBs	smoke-shielding	black C35 matt anodised			per running metre

Suitable options

Order number	Product
900225	Cut to fixed dimensions (KG and MinE)Cut to fixed dimensions, Planet KG and Planet MinE
900923	Profiles in special coloursProfiles with special colors, anodized or powder coated for Planet Socle, Planet KG, Planet F threshold plates (cover plates are not available in special colors)
900908	Version for sliding doorVersion for sliding door, DIN L/R closing
900893	Inclined lip for uneven floors (8 mm profiles)Inclined lip for uneven floors, for 8 mm profiles, DIN L/R
900915	Drop-down seal, top installationDrop-down seal installation at the top, for all Planet types
900440	Silicon protrusionSilicone projection, hinge side: x mm; lock side: y mm, for all Planet types

Accessories/Individual parts

Order number	Product
900014	Stopping plate Type 1 (standard)Stopping plate type 1 (standard), stainless
900188	Stopping plate Type 2Stopping plate Type 2, 38 x 21 mm, incl. screws
900395	Stopping plate Type 3Stopping plate Type 3, 38 x 20.5 mm, incl. screws
900267	UHU adhesive (7 g)UHU adhesive (7 g), for Planet KG drop-down seals (glue seal into protection profile)
900836	Cover plate set for Planet KG-S narrow, KG-F8 narrow Planet F hollow flat rail Planet BT floor separation threshold