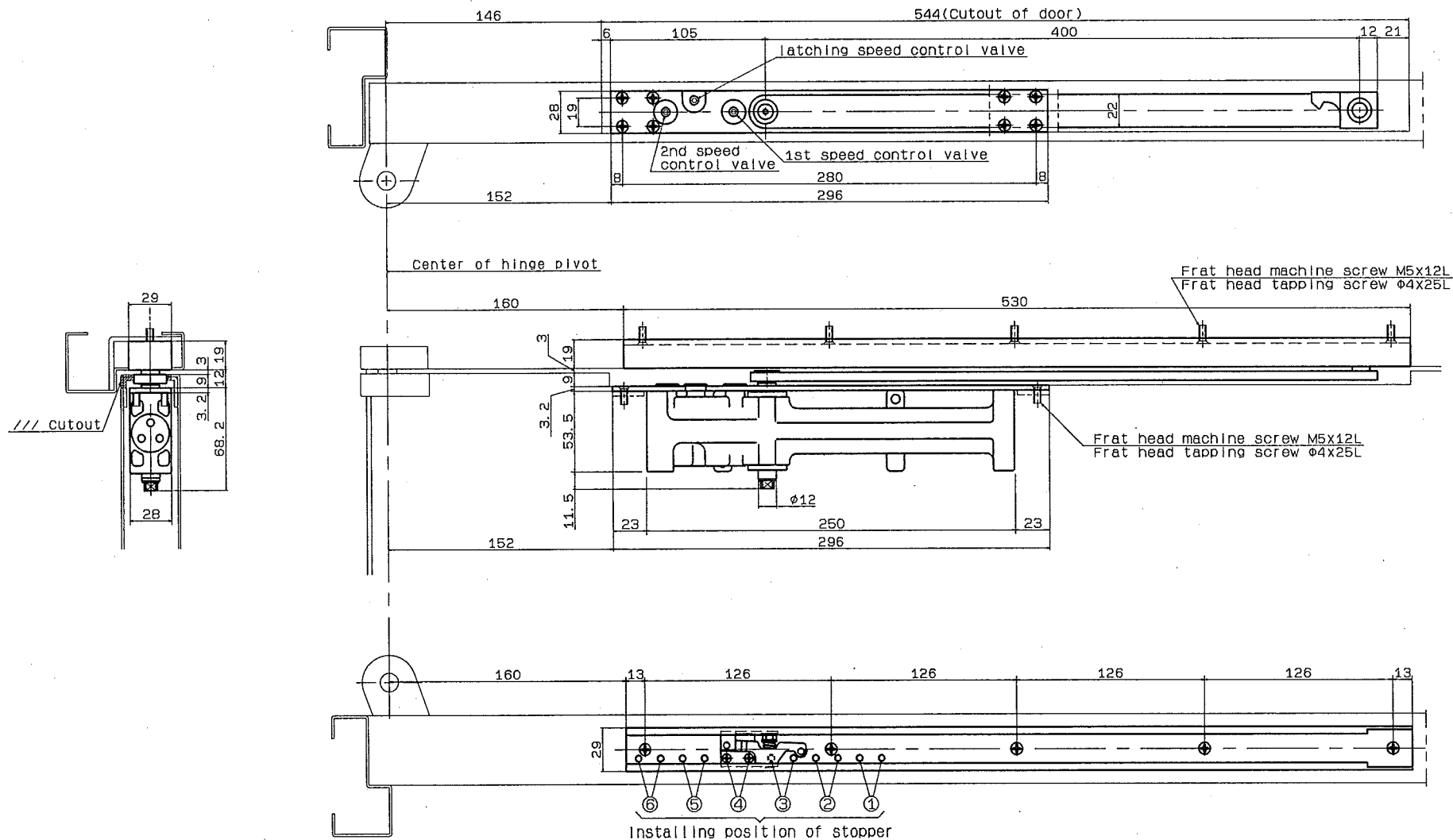


Model No.			Max door dimensions (mm)	Max door weight	Applicable door thickness (mm)		Hold-open device, stopper device installation position	①	②	③	④	⑤	⑥	
without hold-open	with hold-open	with Backcheck			Steel door	Wooden door								
COU-52	COU-152	COU-52BC	900X2100	45kg	36	40								
COU-53	COU-153	COU-53BC	950X2100	65kg	or more	or more								

● The drawing shows right opening door



RYOBI LIMITED	PRODUCTS	APPLICATION	MODEL No.	DATE	REV.
	CONCEALED TYPE	Offset hung(105' opening) · Standard installation	COU-52, COU-53, COU-152, COU-153	07/30/2018	